

Little Italy Peninsula Arts Center

*Regine Bechtler Studios presents*  
*"Extreme Portrait Sculpture"*  
*Workshop In Clay*



*May 16 and 17, 2015*

*Spend a weekend working with master sculptor Peter Rubino, author of "The Portrait in Clay" and "Sculpting the Figure in Clay" – May 16 and 17, 2015 at Regine's spacious working studio located at 703 Horseshoe Bend Beach Rd., Mount Holly, NC 28120.*

The workshop takes place from 9:00am to 4pm with a one hour lunch break. Plenty of time to unwind and stroll on the wooded trails which lead to breathtaking views of Mountain Island Lake. Or simply relax outdoors in the tranquil retreat like the setting of Regine's Little Italy. Class is limited to 8 participants. Register early to reserve your place for this unique learning experience.

**Accommodations:**

Holiday Inn Express & Suites Charlotte Arpt-Belmont, NC. 250 Beaty Dr., Belmont, NC 28012 704-812-2000 12:00am–11:59pm.

**Lunch:**

Please bring your own lunch and enjoy eating outside to experience nature at it's finest.

**Workshop Fee: \$240.00**

(does not include accommodations, clay or firing).

**Please bring your own tools!**

**Tools will be provided for beginners.**



Contact Peter by email  
[petererrubino@gmail.com](mailto:petererrubino@gmail.com)

Or Call 203-733-2388 to register.

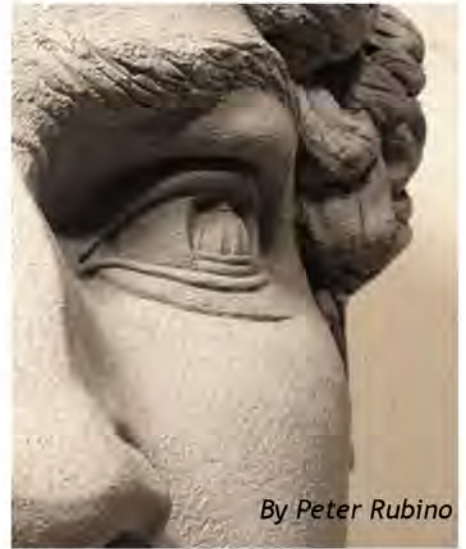


## Extreme Portrait Sculpture – Beginners Welcome

### The Workshop:

Using a fresh and intuitive sculptural language, Rubino will lead you on a technical and artistic journey toward understanding the dynamic and creative forces in larger-than-life-size portrait sculpture. Follow Peter's step-by-step method of blocking in the foundation, establishing facial planes and capturing the essence and expression associated with the human head. Rubino encourages you to go BIG and develop your own individual artistic style. "We don't make mistakes, we make adjustments". Returning students may bring a sculpture project with photo reference, to work on, but check with instructor before registration! Please bring your own sculpting tools, apron, etc.

Looking through the "Eye of David"



By Peter Rubino

### About The Artist:

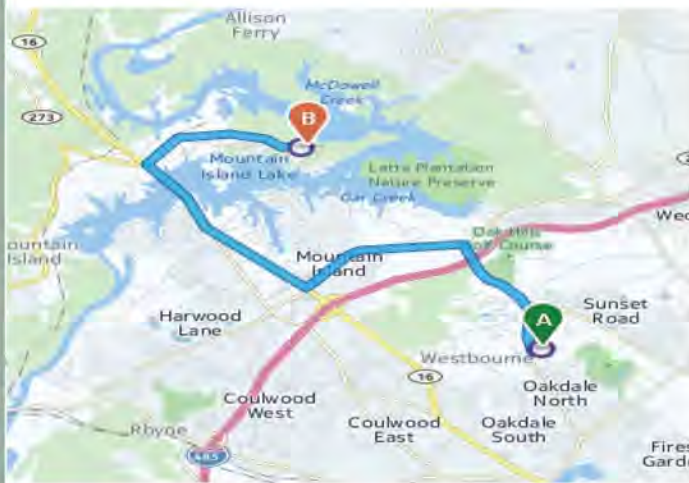


Peter Rubino achieved international acclaim for his 12-foot historic monument "Mother of All Life," which graces the Boyko Research Center at the Ben Gurion University of the Negev in Beer-Sheva, Israel. Other monuments include "Angel," a 35-foot figure created for Disney Corporation, and "Remembrance," a national symbol and tribute to America's fallen war heroes.

Mr. Rubino is an author and performance artist, and has taught in many prestigious institutions such as The Brooklyn Museum Art School and The National Academy Museum School of Fine Art in NYC. He exhibits extensively in the US, specializes in portrait sculpture, and has captured the likeness of such luminaries as President Obama, jazz icon Dave Brubeck, and baseball legends Babe Ruth and Lou Gehrig to name a few.

### Directions to Little Italy Peninsula Arts Center

- ◇ Approaching Charlotte on I-77 or I-85, take the exit for 16 North also called Brookshire Freeway West.
- ◇ After I-85 Junction, continue on 16N another 8.6 miles.
- ◇ After Crossing the bridge over the Catawba River (Mountain Island Lake), turn right at the first traffic light (Horseshoe Bend Beach Road)
- ◇ After 2 miles the road bends sharply to the right. Do not go around bend. Go straight through the entrance gate.
- ◇ You will see a sign with the number 703.



**Workshop Fee: \$240.00**

(does not include accommodations, clay or firing).

**Please bring your own tools!**

**Tools will be provided for beginners.**

Visit [www.rubinostudio.com](http://www.rubinostudio.com)  
to view Rubino's work  
and link to his 90 second youtube video,  
<http://www.youtube.com/watch?v=VsNyXeVp6dc>  
"Symphony in Clay".